

EXISTING HEATING PUMP SET TO BE REMOVED AFTER NEW INFRASTRUCTURE WORKS
 NEW HEATING PUMP SET ON INERTIA BASE WITH SPRING MOUNTS. 125Ø INLET, 100Ø OUTLET IV ON INLET, NR.V AND IV ON OUTLET. ALL VALVES AND PIPEWORK 125Ø. SEE DETAIL LEFT

CORE 2 RISER

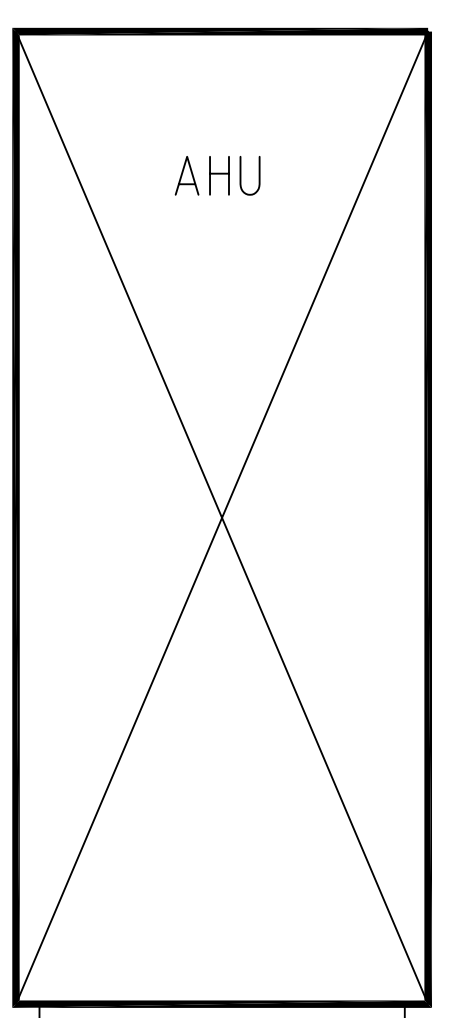
NEW HTG F&R 125Ø AND NEW CHW F&R 150Ø SUPPLY CORE 2. FLOORS 1-9. TA/FA

NEW 125Ø FLOW PIPE WITH IV FROM EXISTING FLANGED CONNECTION

2 NEW 125Ø RETURN CONNECTIONS TO BOILER RING MAIN HEADER EACH WITH COMMISSIONING VALVE

EXACT ROUTE DETERMINED ON SITE PIPEWORK AT H/L

AIR HANDLING PLANT ROOM



RETURN AIR

PIPEWORK TURNS DOWN THRO TOP OF RETURN AIR PLENUM AND DROPS TO FLOOR OF AIR SHAFT - SEAL AIR PLENUM AROUND PIPES AFTER

PIPEWORK RUNS OVER TOP OF EXISTING AIR HANDLING UNIT

PIPEWORK RUNS ACROSS FLOOR OF AIR PLENUM

AIR DUCT

AIR DUCT

STEP AIR SHAFT

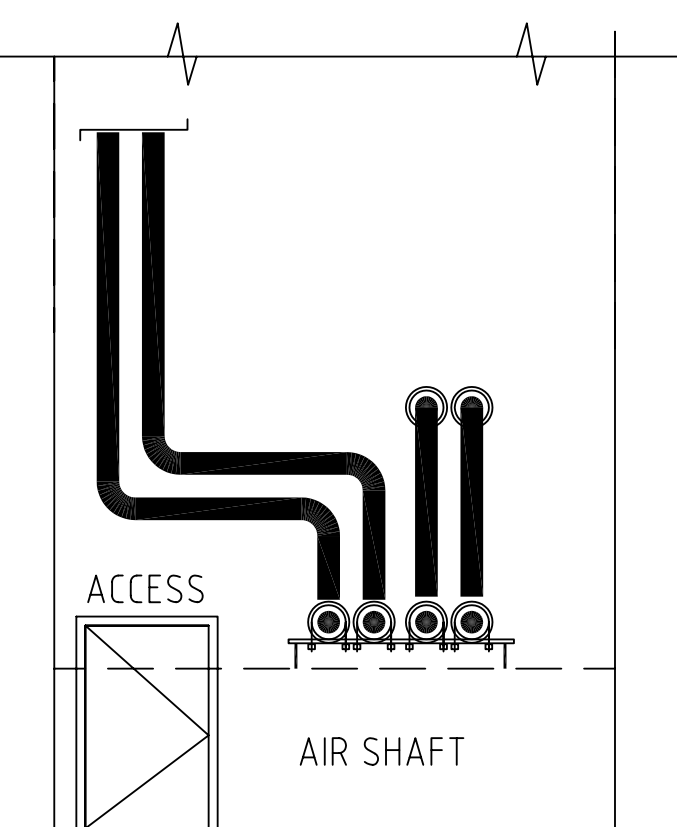
CORE 4 RISER

AIR DUCT

PIPEWORK RISES AND SETS ACROSS TO RISER POSITION IN SHAFT - TO AVOID ACCESS DOOR

STRATTON STREET

HEATING PIPEWORK RISES AND SETS ACROSS TO RISER POSITION IN SHAFT - TO AVOID ACCESS DOOR - CHW PIPEWORK RUNS THRO WALL OUT OF AIR SHAFT



R	RECORD DRAWING	09/08/07
Rev	Description	Date
consultant		
JOHN NOAD (Building Environment) Ltd		
project		
DEVONSHIRE HOUSE LONDON W1		
R.A. FORD Ltd		
H.V.A.C BUILDING SERVICES ENGINEERS		
Unit 6, Canons Road, Canon Industrial Estate, Old Wolverton Milton Keynes, Bucks MK12 5TL		
T 01908 221007 F 01908 221300 E raford.rod@tiscali.co.uk		
drawing title		
INFRASTRUCTURE WORKS BASEMENT LEVEL 2 HTG AND CHW PIPEWORK ROUTES NEW RISERS CORES 2 & 4		
Scale	1:50 @ A0	Drawn RF/MK
Date	AUG 07	Checked RF
drawing number	RAF/M/01	revision
		R
drawing status		
RECORD DRAWING		