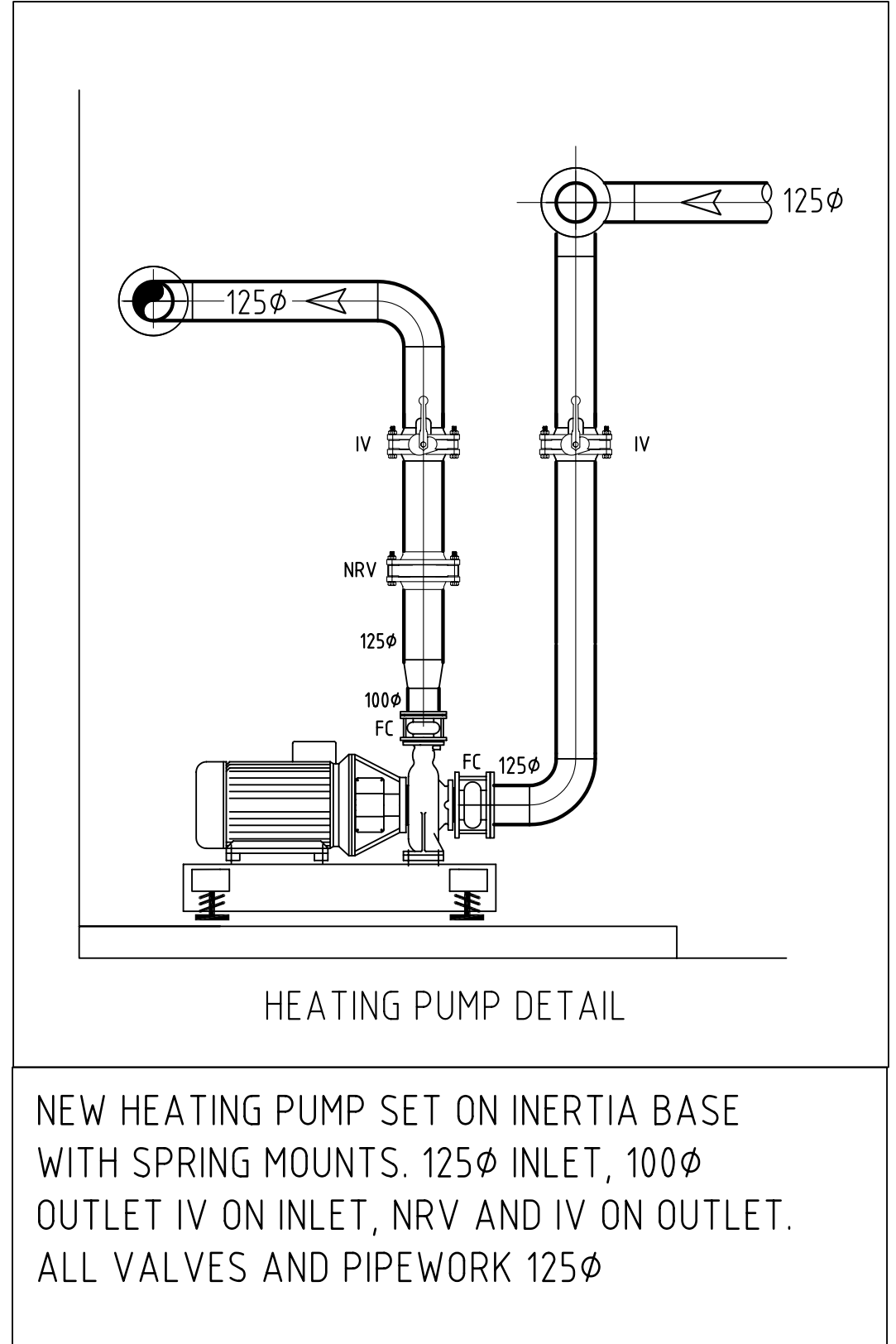
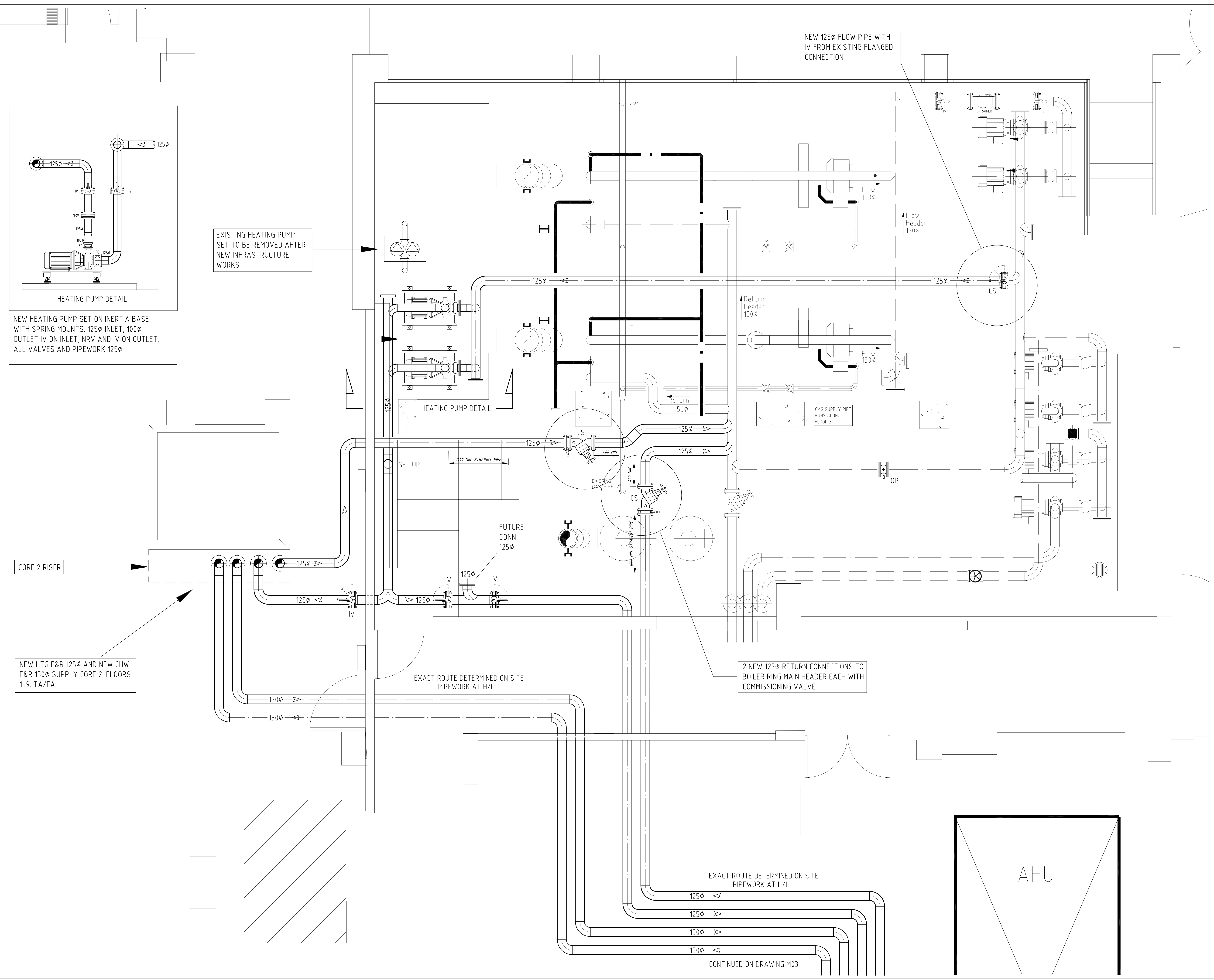


THIS DRAWING IS THE PROPERTY OF R.A. FORD Ltd
 AND AS SUCH MAY NOT BE COPIED OR COMMUNICATED TO
 A THIRD PARTY WITHOUT WRITTEN AUTHORIZATION
 DO NOT SCALE FROM THIS DRAWING: IF IN DOUBT ASK



EXISTING HEATING PUMP SET TO BE REMOVED AFTER NEW INFRASTRUCTURE WORKS

CORE 2 RISER

NEW HTG F&R 125φ AND NEW CHW F&R 150φ SUPPLY CORE 2. FLOORS 1-9. TA/FA

2 NEW 125φ RETURN CONNECTIONS TO BOILER RING MAIN HEADER EACH WITH COMMISSIONING VALVE

EXACT ROUTE DETERMINED ON SITE PIPEWORK AT H/L

EXACT ROUTE DETERMINED ON SITE PIPEWORK AT H/L

CONTINUED ON DRAWING M03

R	RECORD DRAWING	09/08/07
Rev	Description	Date
consultant		
JOHN NOAD (Building Environment) Ltd		
project		
DEVONSHIRE HOUSE LONDON W1		
R.A. FORD Ltd		
H.V.A.C BUILDING SERVICES ENGINEERS		
Unit 6, Canons Road, Canon Industrial Estate, Old Wolverton Milton Keynes, Bucks MK12 5TL		
T 01908 221007 F 01908 221300 E raford.rod@tiscali.co.uk		
drawing title		
INFRASTRUCTURE WORKS BASEMENT LEVEL 2 BOILER ROOM NEW HEATING PUMPS NEW RISERS CORES 2 & 4		
Scale	1:20 @ A0	Drawn RF/MK
Date	AUG 07	Checked RF
drawing number	revision	
RAF/M/02	R	
drawing status		
RECORD DRAWING		